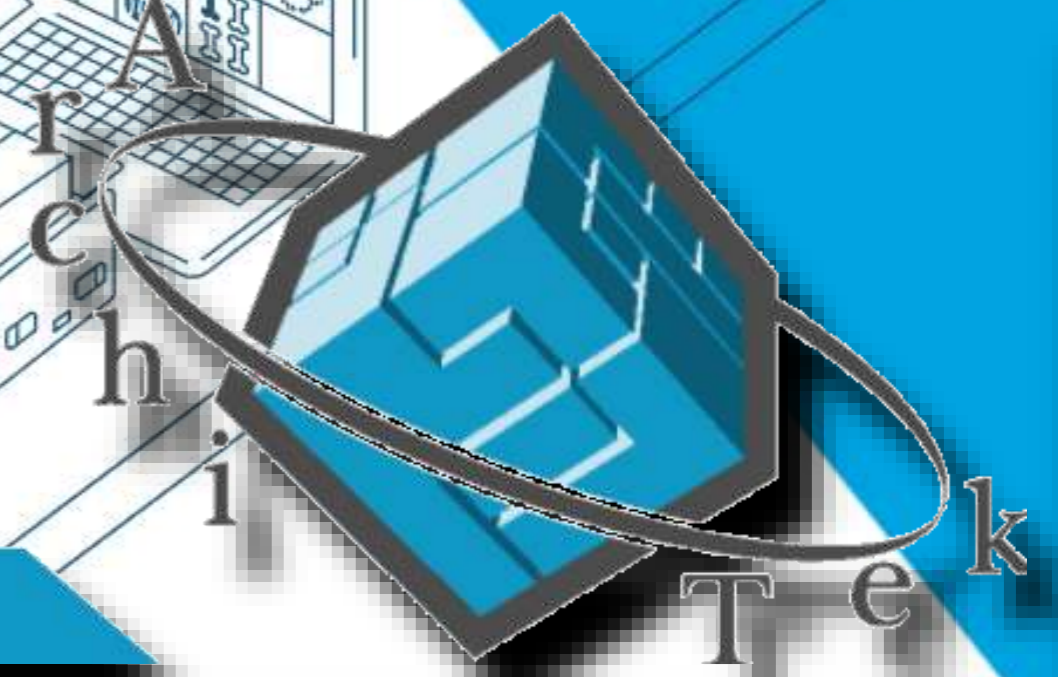


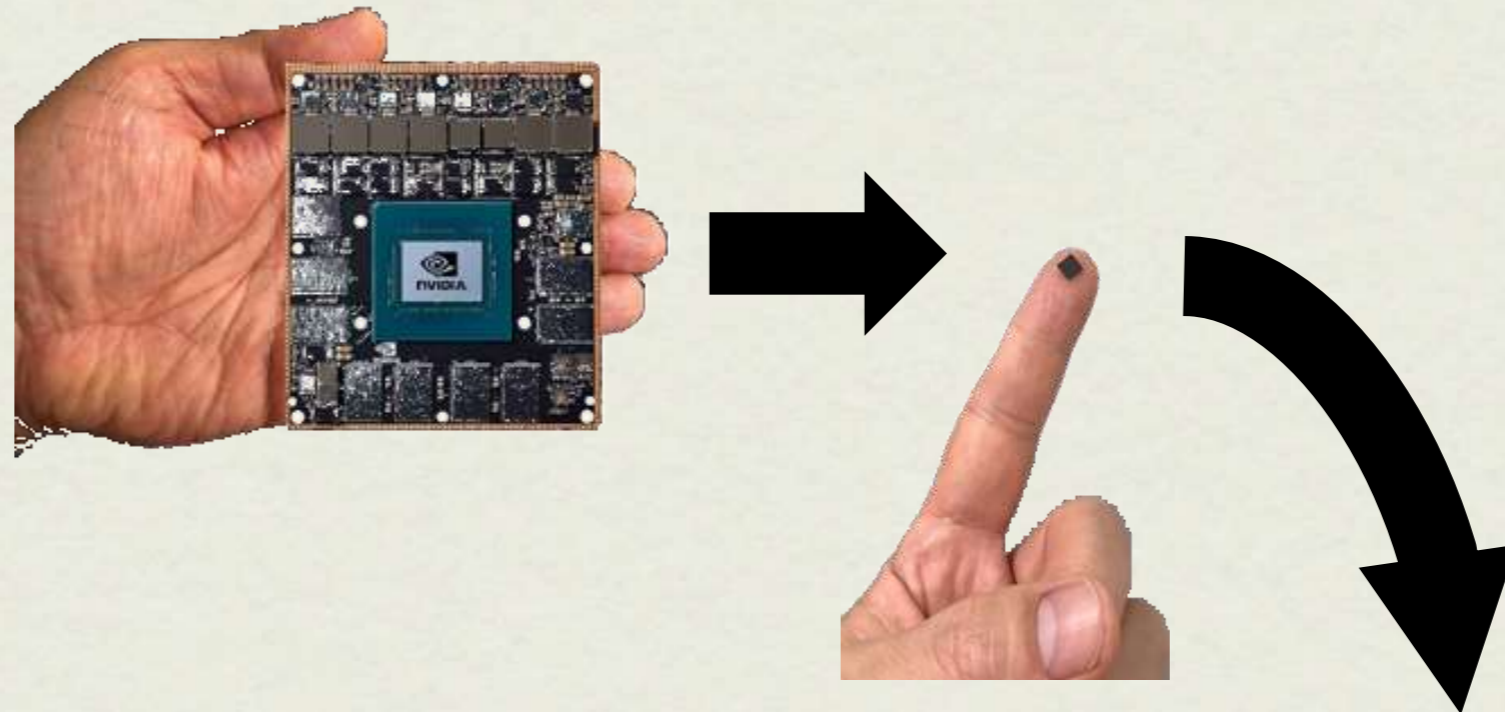
EMC

Edge is machine computation and communication

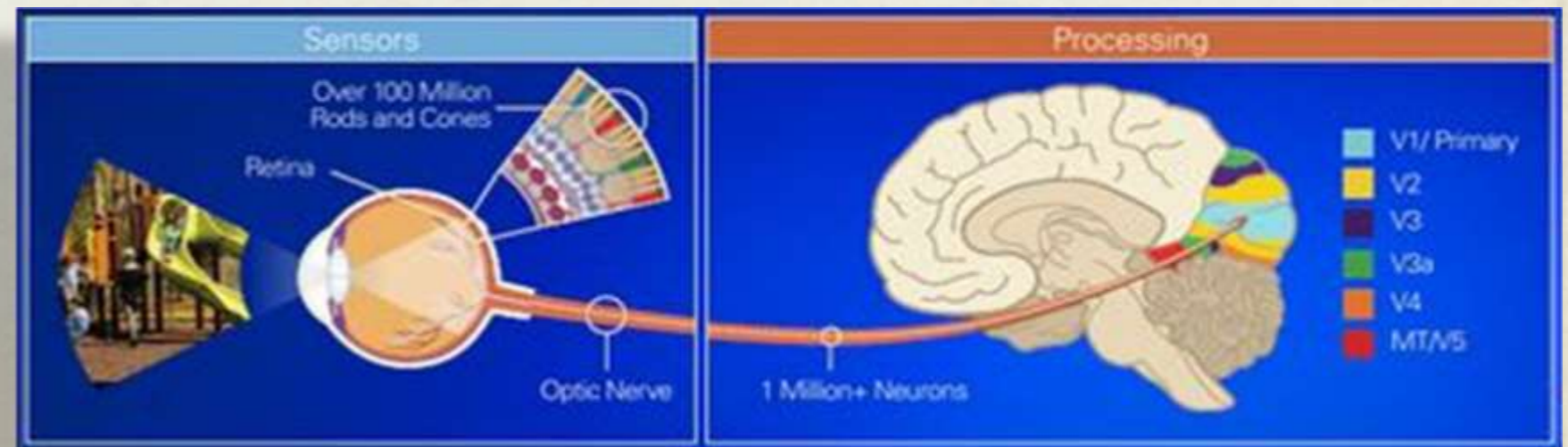
Architek



Intelligence device (aIPE) for edge



**Voice's for low-
power consumption
cost of product
size of product**



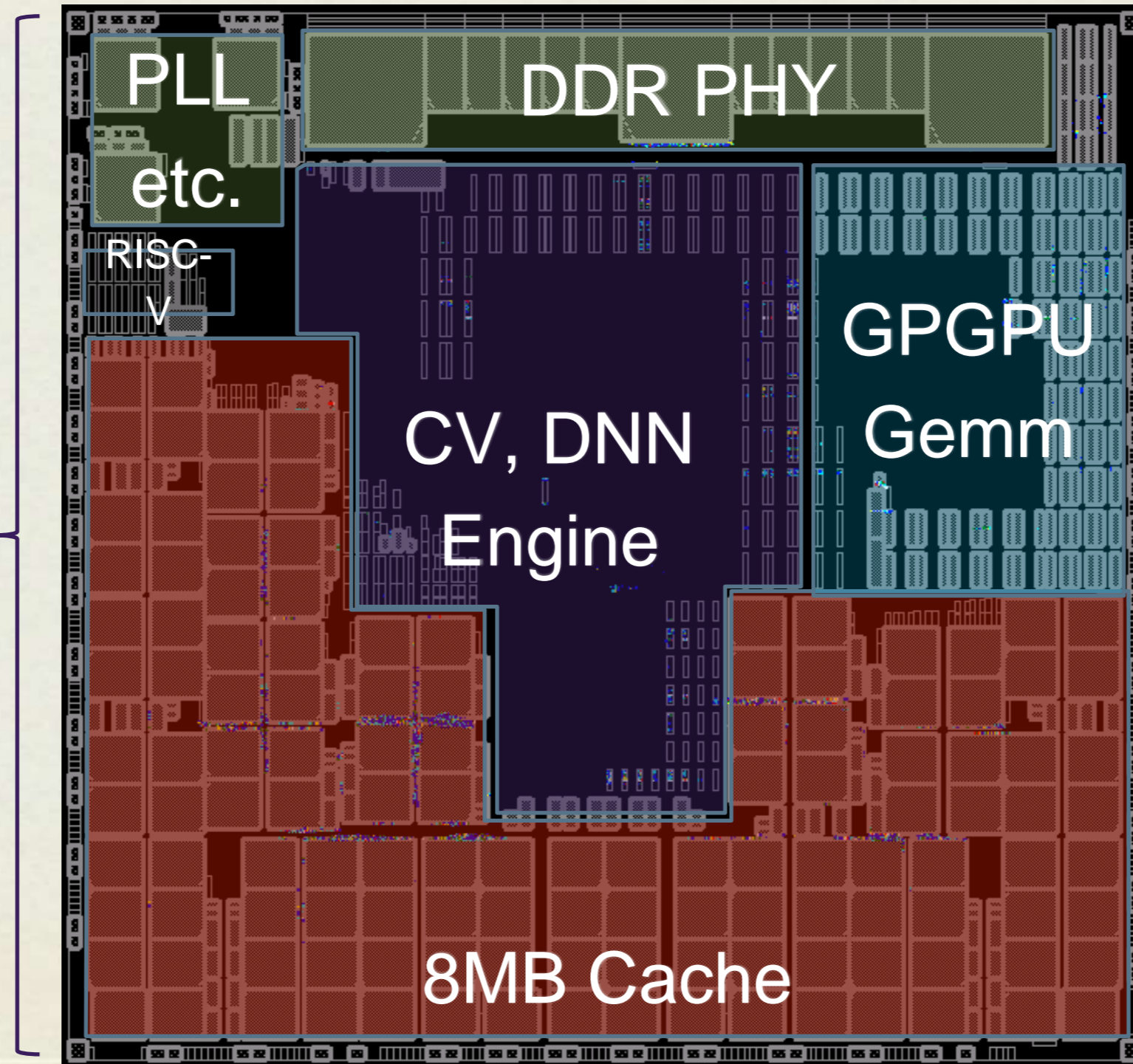
Difference of architecture

	Architecture	Cost	Flexibility
ASIC			
GPGPU	<p>1000 instructions 100~ elements LSI</p>		
aIPE	<p>~100 instructions n-threading 10~ engines n-virtual engines</p>		

**In the future
RISC-V to be as engine
vecotor extension? SMT?**

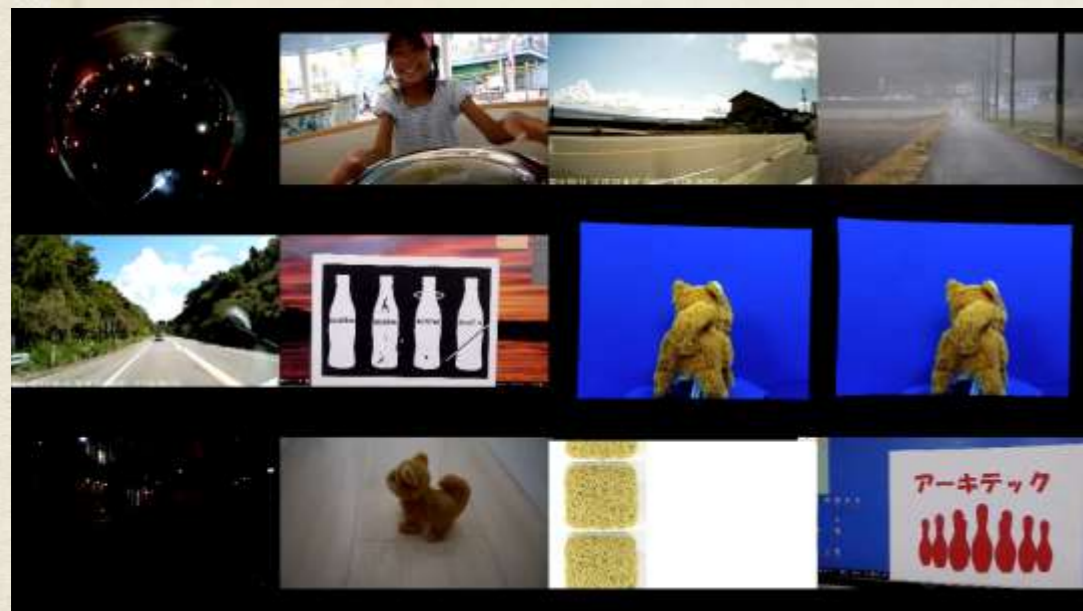
Sample chip@12nm(TSMC) 2020-end

4.5mm

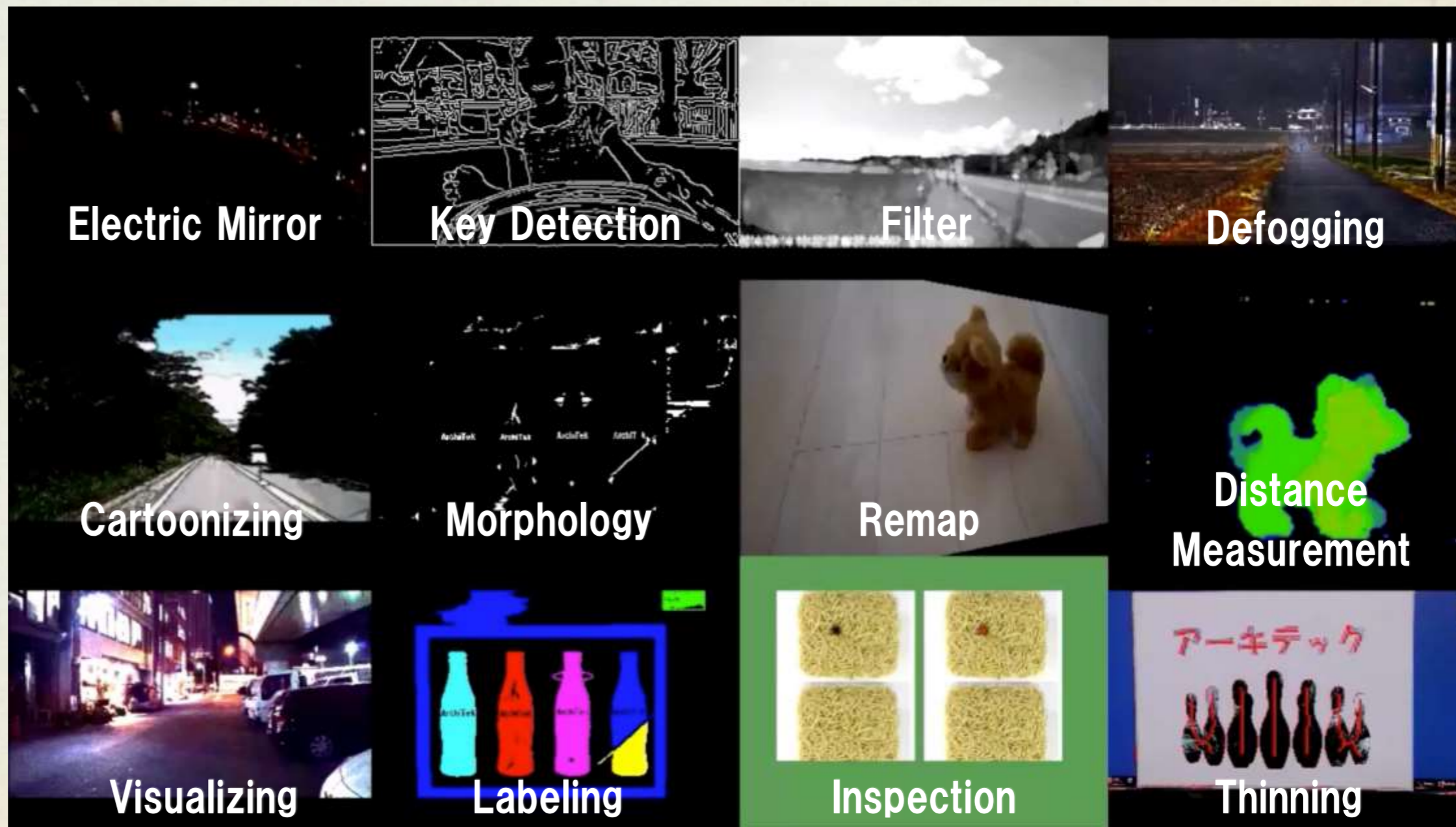
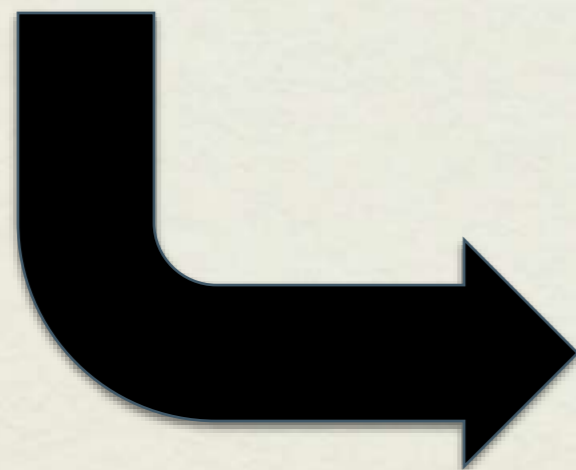


DEMONSTRATION

Simultaneous 12 image processing



INPUT



OUTPUT

OpenPOSE (DNN+etc.)



aIPE

JetsonNano

Thanks!

